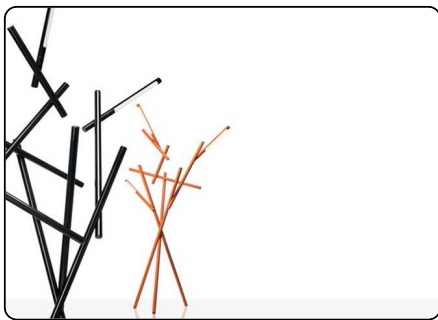


# Tuareg, floor design Ferruccio Laviani 2014

FOSCARINI



Tuareg's structure is inspired by man-made architecture which is nevertheless bound to the world of nature with materials such as branches and cane according to an instinctive, dynamic creative logic. It is chaos turned order, non-traditional geometry echoing a work of land art. By means of a complex industrialisation process, this initial idea took the form of a three dimensional composition of aluminium tubes creating a spectacularly powerfully graphic effect. LED light sources have been incorporated into the extremities of three of these elements which

can be switched on and off separately and adjusted 350 degrees in order to vary the light effect and the lamp's possible uses. The structure has been made even more minimalist by integrated touch switches and the system used to hide the power cables within tubular elements. A formal totem-like presence highlighted by the expressive power of the lamp's two colour variants: a bright orange which echoes the industrial hues of anti-rust paints and black chrome which evokes precious metals. Like a sculptural decoration, Tuareg is the ideal centrepiece for an important

reception space in both public and private spaces and in multiple compositions creating veritable lighting installations too.

# Tuareg, floor technical info

FOSCARINI

## Description

Floor lamp with direct adjustable light made of extruded aluminium coated with liquid paint. Main frame defined by three tubular elements, with an interior ballast at the base and fitted with a non-slip thermoplastic protective foot. On the three main branches, LED boards with independent switches screened with an opaline polycarbonate diffuser. The touch dimmer switch is situated at the lower end of the screen, to turn the lamp on and off and adjust the light intensity. A Teflon seal ensures an easy and durable 350° movement of the three light sources. Black electrical cable. Electronic transformer fitted on the plug. The lamp can be controlled from a wall outlet.

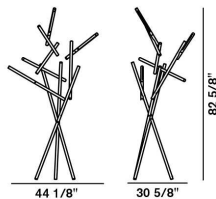
**Materials** varnished aluminium and polycarbonate

**Colors** black chrome, orange



## Model

Tuareg



## Weight

net kg: 16,60  
gross kg: 20,80

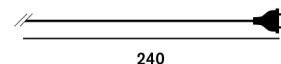
## Packaging

vol. m3: 0,777  
n. boxes: 2

## Bulbs

LED included 54W 3000°K 4050 lm CRI>90 75 lm/W

## Cable length



## Certifications



## Energy Class

A

separate switches and orientable lights touch dimmer included

## Brightness light

directable direct light



[2D/3D drawings](#)  
[photometric info](#)  
[assembly instructions](#)

download area

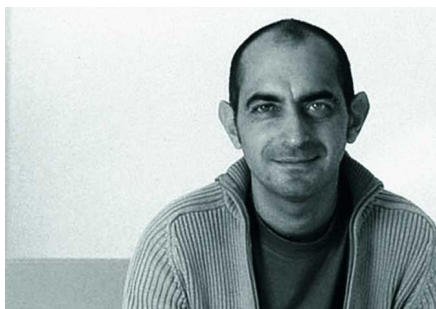


# Tuareg, floor designer

**FOSCARINI**

## Ferruccio Laviani

An architect and designer, he works in the fields of furnishing and furnishing accessories, industrial communication, exhibition, event and show room installation. His contemporary style is hallmarked by a particular sign or color.



Watch the video Tuareg



Go to concept site for Tuareg  
[www.foscarini.com/tuareg](http://www.foscarini.com/tuareg)